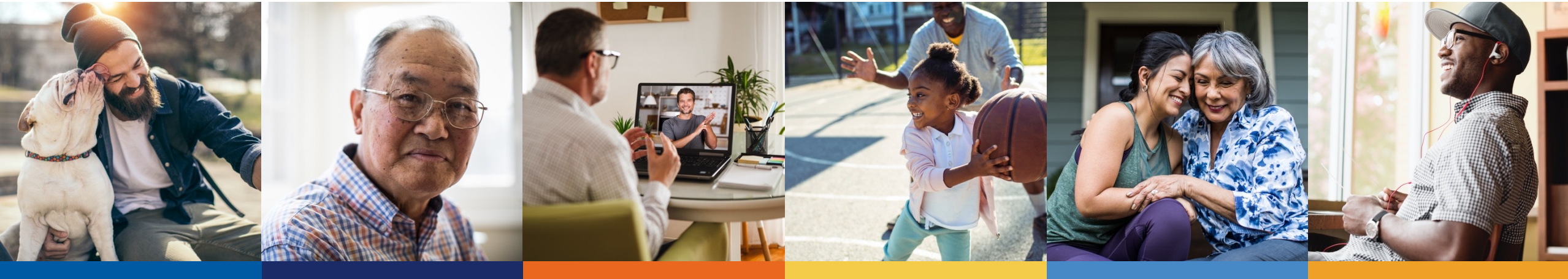


W O R K I N G T O A C H I E V E H E A L T H E Q U I T Y



Puerto Rico Health Insurance Conference 2023

Dr. LaShawn McIver, MD, MPH

March 30, 2023

INFORMATION NOT RELEASABLE TO THE PUBLIC UNLESS AUTHORIZED BY LAW: This information has not been publicly disclosed and may be privileged and confidential. It is for internal government use only and must not be disseminated, distributed, or copied to persons not authorized to receive the information. Unauthorized disclosure may result in prosecution to the full extent of the law.



Today's Discussion Points

- About CMS OMH
- Advancing Equity Across Programs
- Connecting with CMS OMH

About CMS OMH



CMS Office of Minority Health

The Centers for Medicare & Medicaid Services (CMS) is the largest provider of health insurance in the United States, responsible for ensuring that more than 150 million individuals supported by CMS programs (Medicare, Medicaid, Children's Health Insurance Program, and the Health Insurance Marketplaces) are able to get the care and health coverage they need and deserve.

The Centers for Medicare & Medicaid Services Office of Minority Health (CMS OMH) is one of eight offices of minority health within the U.S. Department of Health and Human Services.



CMS Office of Minority Health

Mission

- CMS OMH will lead the advancement and integration of health equity in the development, evaluation, and implementation of CMS's policies, programs, and partnerships.

Vision

- All those served by CMS have achieved their highest level of health and well-being, and we have eliminated disparities in health care quality and access.

Advancing Health Equity Across CMS Programs



CMS Framework for Health Equity

- Allows a framework for CMS to operationalize health equity
- Newly released to expand on the existing CMS Equity Plan to include all CMS programs: Medicare, Marketplace, and Medicaid and CHIP
- Identifies 5 priority areas
- Evidence-based
 - CMS's approach to advancing health equity is informed by decades of research and years of dedicated, focused stakeholder input, and evidence review.
 - Gather and synthesize input from health care providers; federal, state, and local partners; tribal nations; individuals and families; researchers; policymakers; and quality improvement and innovation contractors

CMS Framework for Health Equity 2022–2032



GO.CMS.GOV/OMH



Learn more about the framework at go.cms.gov/framework

CMS Framework for Advancing Health Care in Rural, Tribal, and Geographically Isolated Communities



The CMS Framework for Advancing Health Care in Rural, Tribal, and Geographically Isolated Communities brings a geographic lens to our equity work based on feedback from healthcare professionals and individuals serving these communities.

Learn more about the framework at <https://go.cms.gov/ruralhealth>

Connect with CMS OMH

Contact Us

OMH@cms.hhs.gov

Visit Our Website

go.cms.gov/omh

Listserv Signup

bit.ly/CMSOMH

Coverage to Care

CoverageToCare@cms.hhs.gov

Health Equity Technical

Assistance Program

HealthEquityTA@cms.hhs.gov

Rural Health

RuralHealth@cms.hhs.gov