

CMS 
Strategic Plan

Puerto Rico Health Insurance Conference 2023

Jonathan Blum

Principal Deputy Administrator and Chief Operating Officer





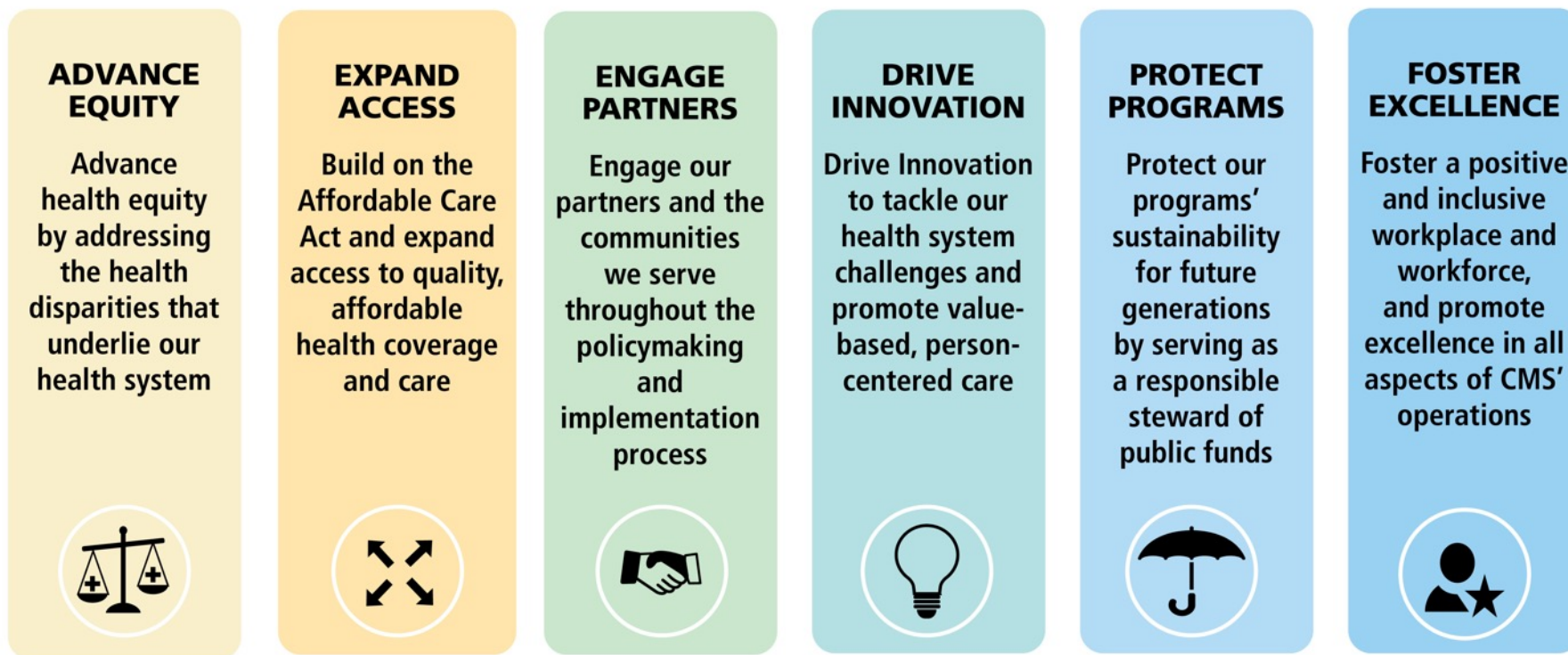
Agenda:

1. Provide an overview of CMS' Strategic Plan
2. Describe how we are working across the agency to address the most urgent issues that affect all of the US
3. Share reflections on our visit to Puerto Rico and how equity for all will continue to drive CMS decision making



CMS serves the public as a trusted partner and steward, dedicated to advancing health equity, expanding coverage, and improving health outcomes.

CMS Strategic Pillars





Elevating Stakeholder Voices through Active Engagement

CMS will ensure that the public has a strong voice throughout CMS' policymaking, operations, and implementation process.

Behavioral Health

Increase and enhance access to equitable and high-quality behavioral health services and improve outcomes for people with behavioral health care needs.



Drug Affordability

Ensure that prescription drugs are accessible and affordable for consumers, providers, plans, our programs, and state partners.



Maternity Care

Work with states, health care facilities, community providers, and other partners to improve the quality of maternity care, expand postpartum coverage, and support a diverse provider workforce.

Benefit Expansion

Implement policy changes and consider opportunities to expand access to coverage and benefits, including high-value services, using existing authorities and health plan flexibilities.



Rural Health

Promote access to high-quality, equitable care for all people served by our programs in rural and frontier communities, Tribal nations, and the U.S. territories.



Supporting Health Care Resiliency

Prepare the healthcare system for operations after the COVID-19 Public Health Emergency (PHE).



National Quality Strategy

Shape a resilient, high-value health care system to promote quality outcomes, safety, equity, and accessibility for all individuals, especially for people within historically underserved and under-resourced communities.





Coverage Transition (COVID-19/PHE Unwinding)

Ensure as many individuals enrolled in Medicaid and the Children's Health Insurance Program (CHIP) maintain a source of coverage as possible after the COVID-19 Public Health Emergency (PHE) continuous enrollment requirement expires.



Nursing Homes and Choice in Long Term Care

Improve safety and quality of care in the nation's nursing homes.

Data to Drive Decision-Making

Make more informed policy decisions based on data and drive innovation and person-centered care through the seamless exchange of data.

Integrating the 3Ms (Medicare, Medicaid & CHIP, Marketplace)

Promote seamless continuity of care, including experience with health care providers and health coverage, for people served by the 3Ms.

Future of Work @ CMS

Foster a culture of care that values employee health and well-being, emphasizes workplace flexibilities and leverages technology to support remote and hybrid collaboration.

Reflections/Questions

