



The Puerto Rico Chamber of Commerce
and its Health Committee present the



PUERTO RICO
Health & Insurance
CONFERENCE 2021

CMS OVERVIEW

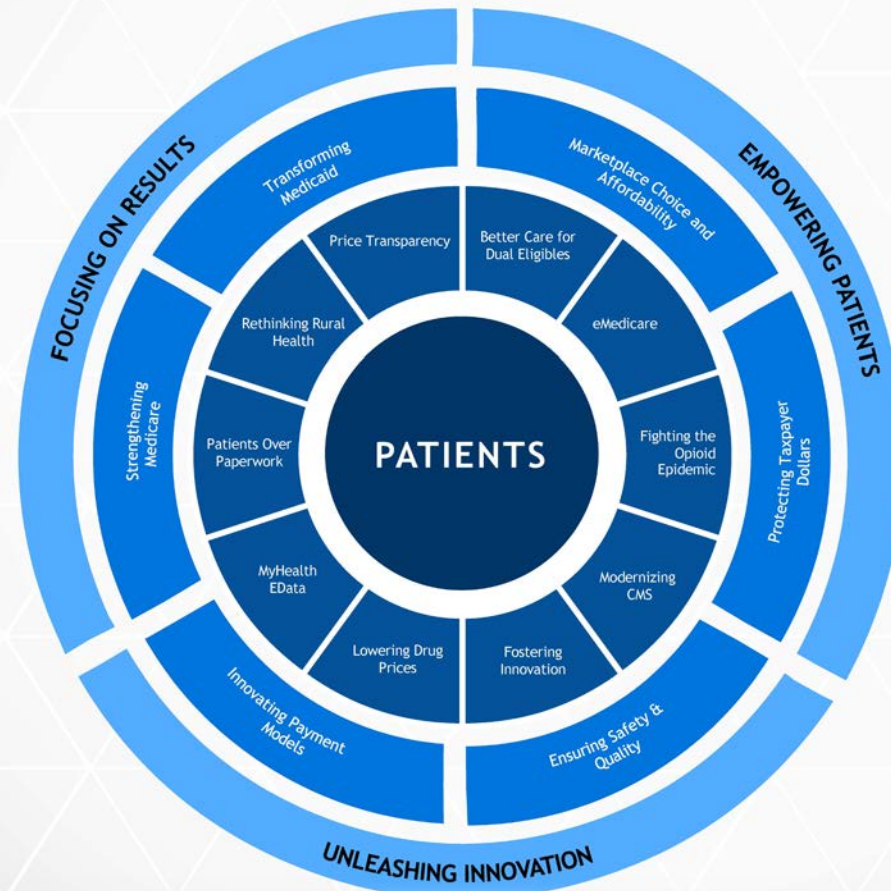
Marina Diaz, MHSA

Director, CMS PR/VI

Office of Program Operations & Local Engagement

March 26, 2021

CMS Strategic Priorities



Robust Program Management

- ❖ Dual Eligibles
- ❖ Delivery System Reform
- ❖ Strengthen Medicare
- ❖ Rural Health
- ❖ Opioids
- ❖ Medicare Reform
- ❖ Price Transparency
- ❖ eMedicare
- ❖ Burden Reduction
- ❖ My Health eData
- ❖ Drug Pricing

Promoting Interoperability Program (PIP)

- ❖ Seamless Exchange of Patient Information Between Healthcare Settings

Amount of Hospitals Received the PIP Incentive in PR

- **34 Hospitals**
 - 7 Hospitals completed the 4th PY
 - 27 Hospitals are in 3rd PY

\$20,780,290.79

- **2022 will start adjustments to those EHs who do not report measures/objectives**
- **Hardship Exemption Application only if the Hospital can show that compliance with the requirement for being a meaningful EHR user would result in a significant hardship**
 - https://www.cms.gov/Regulations-and-Guidance/Legislation/EHRIncentivePrograms/PaymentAdj_Hardship

Admission, Discharge, and Transfer Rules

- ❖ Conditions of Participations (CoP)
- ❖ Starting on May 1, 2021
- ❖ 42 CFR 482-484

Value Based Purchasing Innovation Center

❖ Core Measures

- ↓ COST
- ↑ QUALITY
- ↑ HEALTH STATUS
- ↓ ADMINISTRATIVE BURDEN

Medicaid Drug Reduced Pricing (MDRP)

- ❖ Effective JANUARY 2022, Updates rules on Drug Pricing Driven by the Value of the drug to the individual
 - Reduced Hospitalizations
 - Lab Visits
 - Other

Public Health Emergency COVID-19 Efforts

- ❖ 1135 Waivers
 - Telemedicine

Increased Reimbursement for Vaccine Administration
FROM \$28 TO \$40

Improvement Initiatives

❖ Late Enrollment Fees – Puerto Rico

- Part B \$4m
- Part D \$2.2m



THANK YOU!

Follow us:    

www.camarapr.org

[#CamaraEnAccion](https://twitter.com/CamaraEnAccion)

Puerto Rico Health & Insurance Conference 2021

Questions?

A group of diverse healthcare professionals in a clinical setting. In the foreground, a woman with curly hair, wearing blue scrubs, smiles warmly at the camera. Behind her, several other healthcare workers, including a man in a white lab coat and a woman in blue scrubs, are visible, some smiling. The background is bright and slightly blurred, suggesting a hospital or clinic environment.